



# TS6500CIM

## Automatic Techkit Mixer

Spare Parts Guide  
English, German, French

# SPARE PARTS

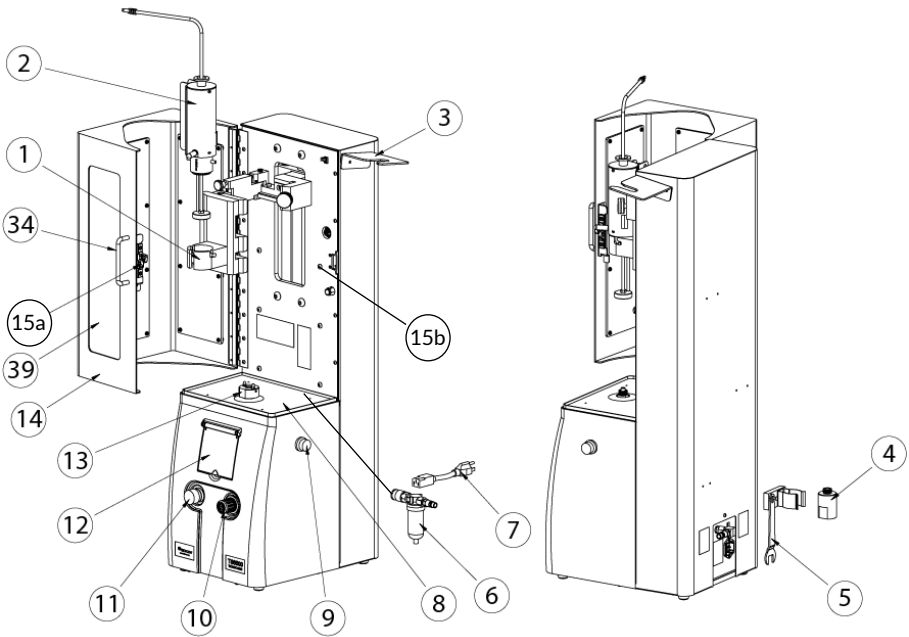


Figure 1.0 Main Assembly

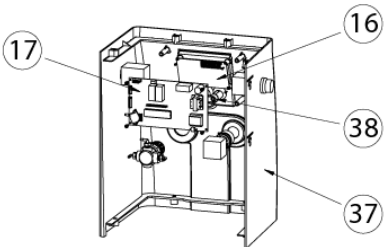


Figure 2.0 Inside Front Cover Assembly

ITEM	PART NUMBER	DESCRIPTION	QTY
1	7091-9010	CARTRIDGE HOLDER, 2.5oz/6oz/8oz	1
	7091-9030	CARTRIDGE HOLDER, 20 oz	1
2	7091-9040	PLUNGER ASSEMBLY, 2.5oz/6oz/8oz	1
	7091-9060	PLUNGER ASSEMBLY, 20 oz	1
3	7091-0740	HOLDER, PLUNGER ASSEMBLY	1
4	7091-0120	SPINDLE EXTENSION	1
5	7091-0530	WRENCH, THIN HEAD, 19mm	1
6	7091-9080	AIR FILTER ASSY (Filter only = 2700-0048)	1
7	6002-0703	POWER CORD	1
8	7091-0500	TRAY	1
9	5100-0079	START PUSH BUTTON	2
10	TSD500-29	AIR REGULATOR	1
11	5100-0078	E-STOP SWITCH	1
12	7091-0510	LCD COVER	1
13	7091-9180	SPINDLE ASSEMBLY	1
14	7091-0430	SAFETY DOOR	1
15a	5100-0077	SAFETY DOOR LATCH	1
15b	5100-0109	SAFETY SWITCH	1

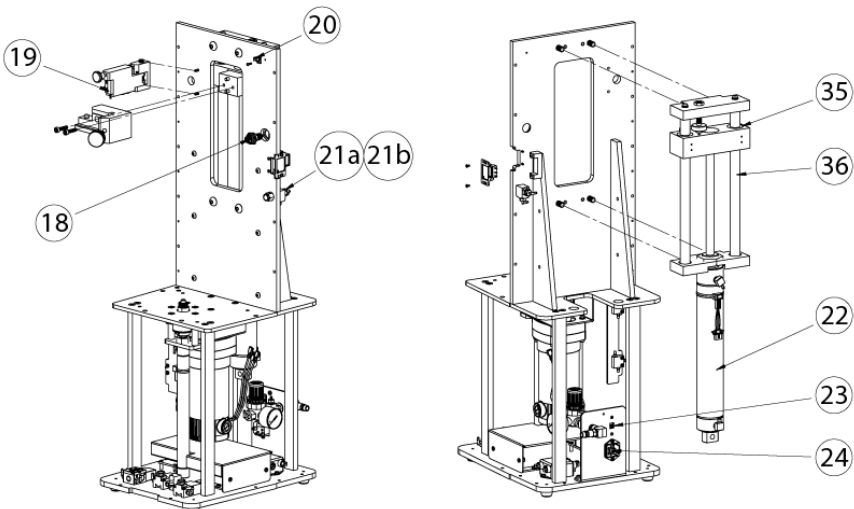


Figure 3.0 Inside Assembly Level One

ITEM	PART NUMBER	DESCRIPTION	QTY
16	2900-0015	LCD	1
17	7091-9000	PCBA, TECHKIT MIXER	1
18	535	PLUNGER AIR INLET	1
19	5500-0008	FLUID LEVEL SENSOR	1
20	3300-0408	TUBE HOLDER, 1/4" TUBE DIA.	1
21a	2600-0162	PRESSURE RELIEF VALVE STEM	1
21b	2600-0163	PRESSURE RELIEF VALVE ACTUATOR	1
22	7091-9140	MAIN AIR CYLINDER	1
23	5100-0060	VOLTAGE SELECT SWITCH	1
24	2100-0372	POWER CONNECTOR	1

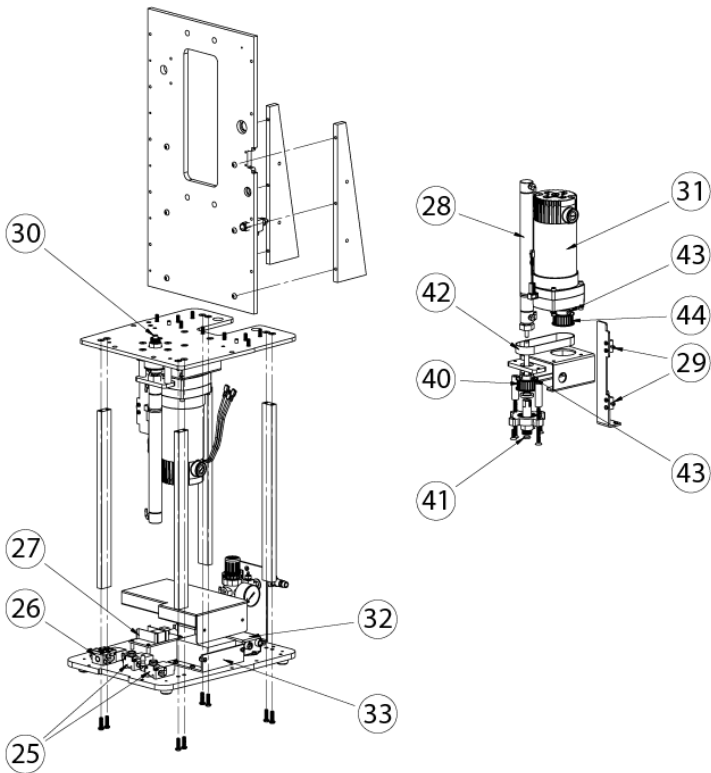


Figure 4.0 Inside Assembly Level 2

ITEM	PART NUMBER	DESCRIPTION	QTY
25	TSD650-21	SOLENOID VALVE	2
26	2600-0132	SOLENOID VALVE, 4-WAY	1
27	1700-0027	DC POWER SUPPLY	1
28	7091-9150	AIR CYLINER, INJECTION ROD	1
29	TSD210-6	FLOW CONTROL	2
30	7091-9130	SPINDLE SHAFT ASSY /BEARING SLEEVE	1
31	7091-9160	MOTOR ASSEMBLY	1
32	2700-0046	FILTER, EMI, 115/250 VAC, 3A, 50-60 Hz	2
33	7091-9120	MOTOR DRIVER	1
34	3300-0409	HANDLE, M4 x 96 MM LG, BLACK ANODIZE	1
35	3300-0465	BUSING LINEAR, .75 ID x 1.25 OD x 1.63 LG, FRELON-LINED	2
36	7091-0210	GUIDE SHAFT	2
37	7091-0450	COVER, BASE	1
38	7091-0540	BUTTON PAD	1
39	7091-0670	PANEL ACRYLIC	3
40	7091-0850	TIMING PULLEY MODIFIED, SPINDLE SHAFT	1
41	3300-0403	O-RING, 8.3 MM ID x 13.1 MM OD x 2.4 MM CS., BUNA-N	1
42	3300-0557	TIMING BELT, TS6500	1
43	2800-0838	SCREW, SET, M4 x 5 MM, EXT. POINT, STEEL, BLK.	2
44	7091-0840	TIMING PULLEY MODIFIED, MOTOR SHAFT	3

## TECHKIT PART NUMBER CHART

SIZE	PART NUMBER	ROD LENGTH	KIT TYPE
<b>2.5 oz. (60 ml)</b>	250-61T	6" (152 mm)	Taped Barrier
	250-81T	8" (203 mm)	Taped Barrier
	250-60	6" (152 mm)	Injection
	250-80	8" (203 mm)	Injection
<b>6.0 oz. (160 ml)</b>	600-61T	6" (152 mm)	Taped Barrier
	600-81T	8" (203 mm)	Taped Barrier
	600-60	6" (152 mm)	Injection
	600-80	8" (203 mm)	Injection
<b>8.0 oz. (220 ml)</b>	800-61T	6" (152 mm)	Taped Barrier
	800-81T	8" (203 mm)	Taped Barrier
	800-60	6" (152 mm)	Injection
	800-80	8" (203 mm)	Injection
<b>20 oz (550 ml)</b>	200-81T	8" (203 mm)	Taped Barrier
	200-80	8" (203 mm)	Injection
<b>1/10 gal (310 ml)</b>	110-81T	8" (203 mm)	Taped Barrier
	110-80	8" (203 mm)	Injection



TECHCON



# TS6500CIM

Automatik Techkit Mixer

ERSATZTEILE UND ZUBEHÖR

Deutsch



# ERSATZTEILE UND ZUBEHÖR

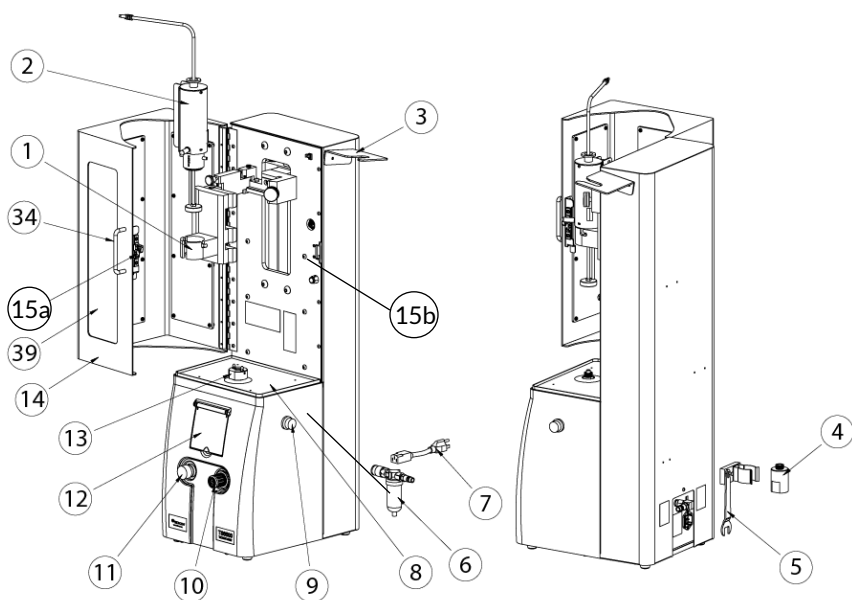


Bild. 1.0 Hauptgerät

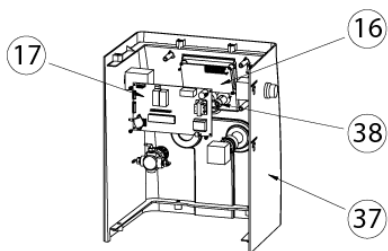


Bild. 2.0 Innenseite Frontabdeckung



Teil	Artikel Nummer	Beschreibung	Menge
1	7091-9010	Kartuschenhalter, 2.5/6/8oz	1
	7091-9030	Kartuschenhalter, 20 oz	1
2	7091-9040	Bajonettkopf, 2.5oz/6oz/8oz	1
	7091-9060	Bajonettkopf, 20 oz	1
3	7091-0740	Bajonettkopfhalter	1
4	7091-0120	Drehantriebadapter	1
5	7091-0530	Maulschlüssel, flach	1
6	7091-9080	Luftfilterbaugruppe (Filter Allein=2700-0048)	1
7	6002-0703	Stromkabel	1
8	7091-0500	Auffangschale	1
9	5100-0079	Startknopf	1
10	TSD500-29	Druckluftregler	1
11	5100-0078	Not Aus Schalter	1
12	7091-0510	Anzeigenabdeckung	1
13	7091-9180	Drehantrieb	1
14	7091-0430	Sicherheitstür	1
15a	5100-0077	Sicherheitstürverschluss	1
15b	5100-0109	Sicherheitsschalter	1

Teil	Artikel Nummer	Beschreibung	Menge
16	2900-0015	LCD	1
17	7091-9000	PCBA, Techkit Mischer	1
18	535	Druckluftsteckdose	1
19	5500-0008	Füllstandssensor	1
20	3300-0408	Schlauchhalterung 1/4"	1
21a	2600-0162	Druckablassventil	1
21b	2600-0163	Druckablass-schalter	1
22	7091-9140	Hauptzylinder	1
23	5100-0060	Spannungswahlschalter	1
24	2100-0372	Stromeingang	1

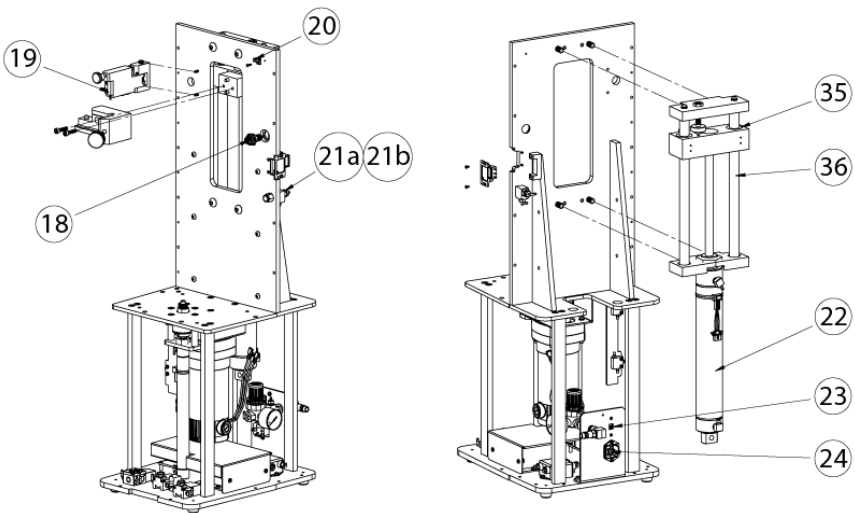


Bild. 3.0 Innenseite, Bauebene 1

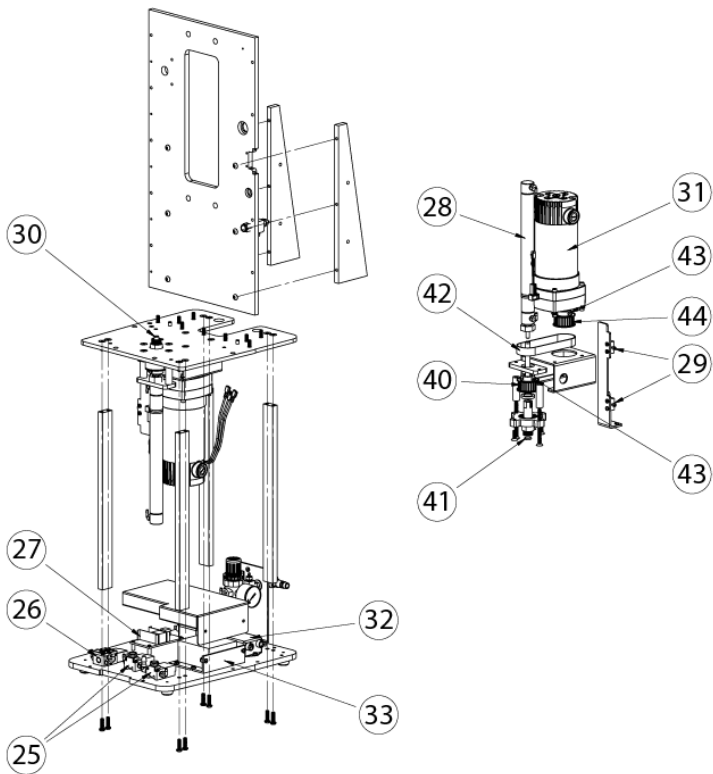


Bild. 4.0 Innenseite, Bauebene 2

Teil	Artikel Nummer	Beschreibung	Menge
25	TSD650-21	Magnetventil	2
26	2600-0132	Magnetventil, 4-Wege	1
27	1700-0027	DC Stromzufuhr	1
28	7091-9150	Druckzylinder, Einspritzstab	1
29	TSD210-6	Druckregler	1
30	7091-9130	Drehantriebswelle	1
31	7091-9160	Motor - Baugruppe	1
32	2700-0046	Filter, EMI, 115/250 VAC, 3A 50-60Hz	2
33	7091-9120	Motorsteuerung	1

ITEM	PART NUMBER	DESCRIPTION	QTY
34	3300-0409	GRIFF, M4 X 96MM LG, SCHWARZ ANODIZE	1
35	3300-0465	LINEAR BUSING, .75 IDX1.250DX1.63 LG, FRELON-LINED	2
36	7091-0210	GUIDE SHAFT	2
37	7091-0450	ABDECKUNG, BASIS	1
38	7091-0540	KNOPF-AUFLAGE	1
39	7091-0670	PANEL ACRYL	3
40	7091-0850	ZEITPULLE MODIFIZIERT, SPINDELWELLE	1
41	3300-0403	O-RING, 8,3 MM ID X 13,1 MM OD X 2,4 MM CS., BUNA-N	1
42	3300-0557	ZAHNRIEMEN, TS6500	1
43	2800-0838	SCHRAUBE, SET, M4 X 5MM, EXT. PUNKT, STAHL, BLK.	2
44	7091-0840	ZEITPULLE MODIFIZIERT, MOTORWELLE	3

## TECHKIT ARTIKELNUMMERN

Größe	Artikelnummer	Stablänge	Techkit-System
2.5 oz. (60 ml)	250-61T	6" (152 mm)	Trennkammer
	250-81T	8" (203 mm)	Trennkammer
	250-60	6" (152 mm)	Einspritzsystem
	250-80	8" (203 mm)	Einspritzsystem
6.0 oz. (160 ml)	600-61T	6" (152 mm)	Trennkammer
	600-81T	8" (203 mm)	Trennkammer
	600-60	6" (152 mm)	Einspritzsystem
	600-80	8" (203 mm)	Einspritzsystem
8.0 oz. (220 ml)	800-61T	6" (152 mm)	Trennkammer
	800-81T	8" (203 mm)	Trennkammer
	800-60	6" (152 mm)	Einspritzsystem
	800-80	8" (203 mm)	Einspritzsystem
20 oz. (550 ml)	200-81T	8" (203 mm)	Trennkammer
	200-80	8" (203 mm)	Einspritzsystem
1/10 gal (310 ml)	110-81T	8" (203 mm)	Trennkammer
	110-80	8" (203 mm)	Einspritzsystem



# TS6500CIM

## Mélangeur automatique Techkit

LISTE DE PIÈCES DE RECHANGE  
Français

## LISTE DE PIÈCES DE RECHANGE

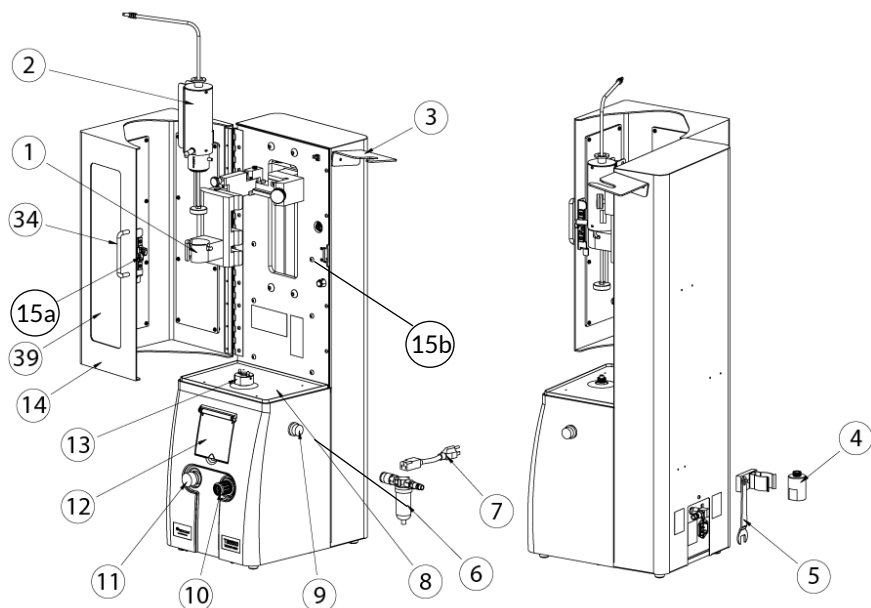


Figure 1.0 Assemblage principal

	D'ARTICLE	DESCRIPTION	QTÉ
1	7091-9010	SUPPORT DE CARTOUCHE, 2.5 oz/6 oz/8 oz	1
	7091-9030	SUPPORT DE CARTOUCHE, 20 oz	1
2	7091-9040	PISTON, 2.5 oz/6 oz/8 oz	1
	7091-9060	PISTON, 20 oz	1
3	7091-0740	SUPPORT DE PISTON	1
4	7091-0120	EXTENSION DE BROCHE	1
5	7091-0530	CLÉ, TÊTE FINE, 19 mm	1
6	7091-9080	FILTRE À AIR (Filtre uniquement = 2700-0048)	1
7	6002-0703	CORDON D'ALIMENTATION	1
8	7091-0500	BAC	1
9	5100-0079	BOUTON POUSSOIR DE DÉMARRAGE	2
10	TSD500-29	RÉGULATEUR D'AIR	1
11	5100-0078	INTERRUPTEUR D'ARRÊT D'URGENCE	1
12	7091-0510	COUVERCLE LCD	1
13	7091-9180	BROCHE	1
14	7091-0430	PORTE DE SÉCURITÉ	1
15a	5100-0077	VERROU DE PORTE DE SÉCURITÉ	1
15b	5100-0109	INTERRUPTEUR DE SÉCURITÉ	1

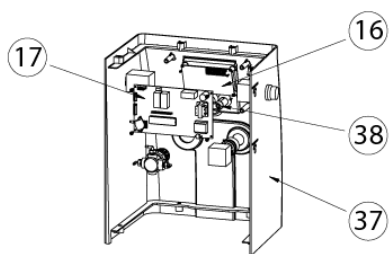


Figure 2.0 Intérieur du couvercle avant

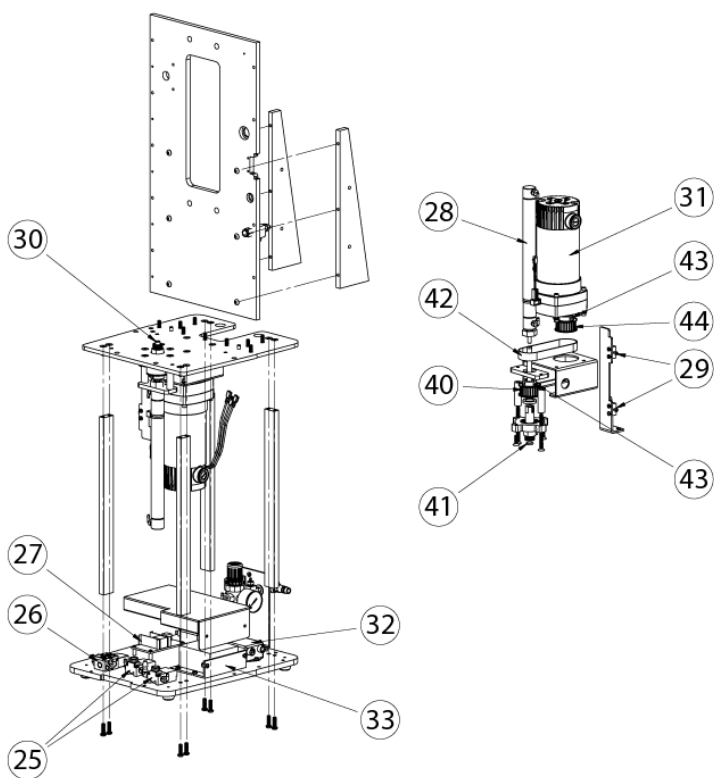


Figure 3.0 Intérieur de niveau un



	D'ARTICLE	DESCRIPTION	QTÉ
16	2900-0015	LCD	1
17	7091-9000	PCBA, MÉLANGEUR TECHKIT	1
18	535	PRISE D'AIR DU PISTON	1
19	5500-0008	CAPTEUR DE NIVEAU DE FLUIDE	1
20	3300-0408	SUPPORT DE TUBE, ¼" TUBE DIA.	1
21a	2600-0162	TIGE DE VANNE DE SÉCURITÉ	1
21b	2600-0163	ACTIONNEUR DE VANNE DE SÉCURITÉ	1
22	7091-9140	CYLINDRE PNEUMATIQUE PRINCIPAL	1
23	5100-0060	INTERRUPTEUR DE SÉLECTION DE TENSION	1
24	2100-0372	CONNECTEUR D'ALIMENTATION	1

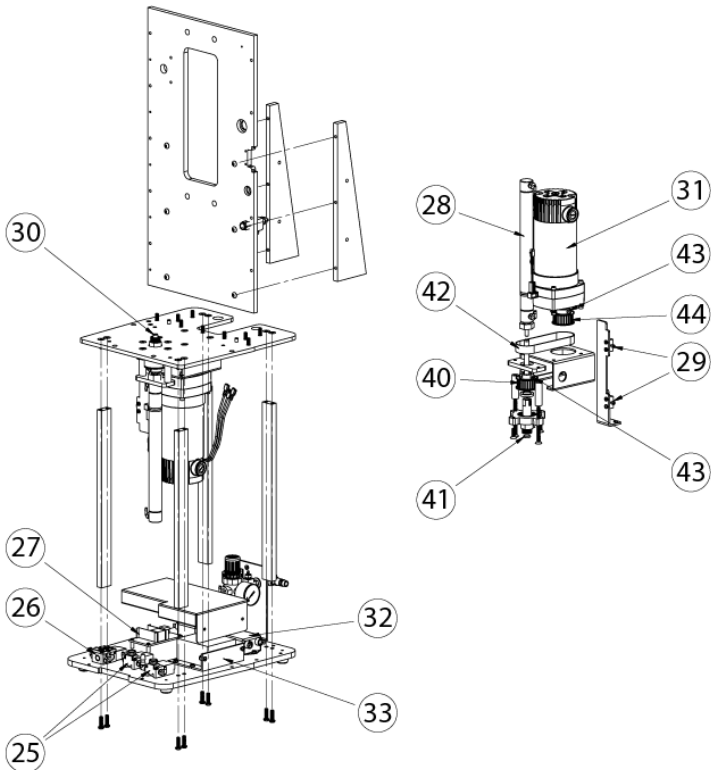


Figure 4.0 Intérieur de niveau 2

	D'ARTICLE	DESCRIPTION	QTÉ
25	TSD650-21	VALVE SOLÉNOÏDE	2
26	2600-0132	VALVE SOLÉNOÏDE, 4-VOIES	1
27	1700-0027	ALIMENTATION CC	1
28	7091-9150	CYLINDRE PNEUMATIQUE, TIGE D'INJECTION	1
29	TSD210-6	CONTRÔLE DU DÉBIT	2
30	7091-9130	ARBRE DE BROCHE/MANCHON DE PALIER	1
31	7091-9160	MOTEUR	1
32	2700-0046	FILTRE, EMI, 115/250 V, 3A, 50-60 Hz	2
33	7091-9120	ENTRAÎNEMENT DU MOTEUR	1

	D'ARTICLE	DESCRIPTION	QTÉ
34	3300-0409	POIGNEE, M4 X 96MM LG, ANODISE NOIRE	1
35	3300-0465	BUS LINEAIRE, .75 IDX1.250DX1.63 LG, FRELON-LINED	2
36	7091-0210	ARBRE DE GUIDAGE	2
37	7091-0450	COUVERTURE, BASE	1
38	7091-0540	BOUTON DE BOUTON	1
39	7091-0670	PANNEAU ACRYLIQUE	3
40	7091-0850	POULIE DE DISTRIBUTION MODIFIEE, ARBRE DE BROCHE	1
41	3300-0403	JOINT TORIQUE, 8,3 MM ID X 13,1 MM OD X 2,4 MM CS., BUNA-N	1
42	3300-0557	COURROIE DE DISTRIBUTION, TS6500	1
43	2800-0838	VIS, SET, M4 X 5MM, EXT. POINT, ACIER, BLK.	2
44	7091-0840	POULIE DE DISTRIBUTION MODIFIEE, ARBRE DE MOTEUR	3

## Tableau des numéros de pièces Techkit

TAILLE	RÉFÉRENCE	LONGUEUR DE TIGE	TYPE DE KIT
2.5 oz. (60 ml)	250-61T	6" (152 mm)	Barre collée
	250-81T	8" (203 mm)	Barre collée
	250-60	6" (152 mm)	Injection
	250-80	8" (203 mm)	Injection
6.0 oz. (160 ml)	600-61T	6" (152 mm)	Barre collée
	600-81T	8" (203 mm)	Barre collée
	600-60	6" (152 mm)	Injection
	600-80	8" (203 mm)	Injection
8.0 oz. (220 ml)	800-61T	6" (152 mm)	Barre collée
	800-81T	8" (203 mm)	Barre collée
	800-60	6" (152 mm)	Injection
	800-80	8" (203 mm)	Injection
20 oz. (550 ml)	200-81T	8" (203 mm)	Barre collée
	200-80	8" (203 mm)	Injection
1/10 gal (310 ml)	110-81T	8" (203 mm)	Barre collée
	110-80	8" (203 mm)	Injection

**Techcon Corporate Headquarters**

10800 Valley View Street

Cypress, California, 90630, USA.

Tel: 1-714-230-2398

Fax: 1-714-230-2393

E-mail: [oemorders@okininternational.com](mailto:oemorders@okininternational.com)

**Techcon European Corporate Office**

Eagle Close, Chandler's Ford Industrial Estate

Eastleigh, Hampshire, SO53 4NF, UK

Tel: +44 2380 489 100,

Fax: +44 2380 489 109

E-mail: [europa-orders@okininternational.com](mailto:europa-orders@okininternational.com)

**Techcon China Corporate Office**

4th Floor East, The Electronic Building

Yanxiang Industrial Zone

High Tech Road, Guangming New District

Shenzhen, P.R.C.

Phone: +86-755-2327 6366

Fax: +86-755-2329 5492



TECHCON™

[techcon.com](http://techcon.com)